

# WELCOME



## LEMMON DRIVE TRAFFIC IMPROVEMENTS & RESILIENCY PROJECT PUBLIC INFORMATION MEETING



U.S. Department of Transportation  
Federal Highway  
Administration



# WHY IS THE PROJECT NEEDED?

## Project Need

In 2017, Lemmon Drive was overtopped by floodwaters and faced emergency closures and an extensive mitigation response which disrupted the community's access highlighting the need for a more resilient roadway.

In addition, multimodal enhancements were identified as a community need in the RTC's North Valleys Regional Transportation Study.



## Project Purpose

- Provide a safe and reliable regional road with at least one dry lane in each direction of travel during a 100-year flood event. (Determined by FEMA Base Flood Elevation)
  - 1% yearly chance of roadway being under water
- Provide safe access for all multi-modal users with enhanced shared use path opportunities and safer pedestrian crossings
- Rehabilitate and upgrade Lemmon Drive to meet current design standards, 2050 RTP regional needs, and address any deficiencies or safety concerns in the existing roadway alignment
- Provide opportunities along Lemmon Drive to aid in long-term flood response planning and reducing maintenance costs for Washoe County and City of Reno



Scan this code to access to the project website.↓





# ROADWAY ALTERNATIVE SCREENING PROCESS

## Level 1 Screening

The RTC conducted a Level 1 Alternatives Analysis Screening for the Lemmon Drive Traffic Improvements and Resiliency Project in early 2020. Twelve alternatives, including the No Build, were developed and evaluated against project goals at the February 2020 Technical Advisory Committee workshop.

### Alternatives were dismissed if they:

- » Did not meet 2050 RTP regional needs
- » Would not meet dry lane needs
- » Were cost prohibitive
- » Impacted neighborhoods
- » Had safety concerns

## Level 2 Screening

Of the twelve alternatives, three advanced to the Level 2 screening and were presented to the RTC Board in August 2020. Those alternatives were Alternative 2, Alternative 6, and Alternative 8.



### Alternative 2

Elevate Existing Lemmon Drive



### Alternative 6

Natural Berm Alignment



### Alternative 8

Deodar Alignment

Level 1 and 2 Alternatives Analysis Screening Reports can be viewed at [www.northvalleysimprovements.com](http://www.northvalleysimprovements.com).

Scan this code to access to the project website.↓







LEMMON DRIVE  
PROJECT

# STUDY AREA



The study area is along Lemmon Drive from Fleetwood Drive to Ramsey Way.

Scan this code to access to the project website.↓



## Lemmon Drive Traffic Improvements & Resiliency Project

*All information presented is preliminary and subject to revision*

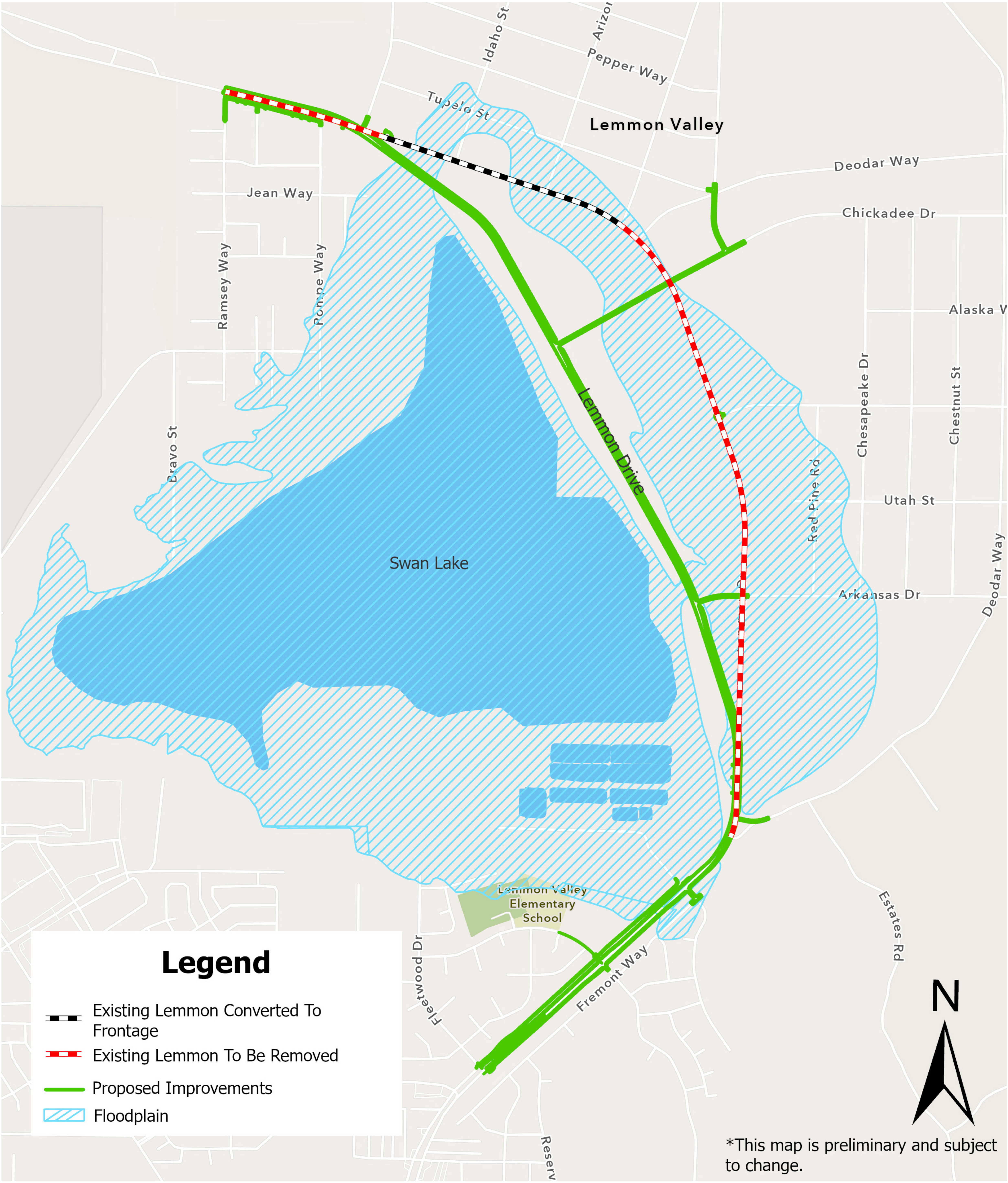






LEMMON DRIVE  
PROJECT

# RTC ENDORSED ALTERNATIVE



- RTC endorsed an alternative at the completion of the level 2 alternatives screening
- Minimizes traffic control
- Reduces required earthwork balancing to avoid altering the base flood elevation

Scan this code to access to the project website.↓



## Lemmon Drive Traffic Improvements & Resiliency Project

All information presented is preliminary and subject to revision





# STUDY PROCESS

## What is NEPA?

- » NEPA is the National Environmental Policy Act (1969), requiring federal agencies to assess the environmental effects of proposed actions before making decisions.
- » Using the NEPA process, agencies evaluate the environmental, social, and economic effects of proposed actions. Agencies also provide opportunities for public involvement throughout the process.



Scan this code to access to the project website.↓

