



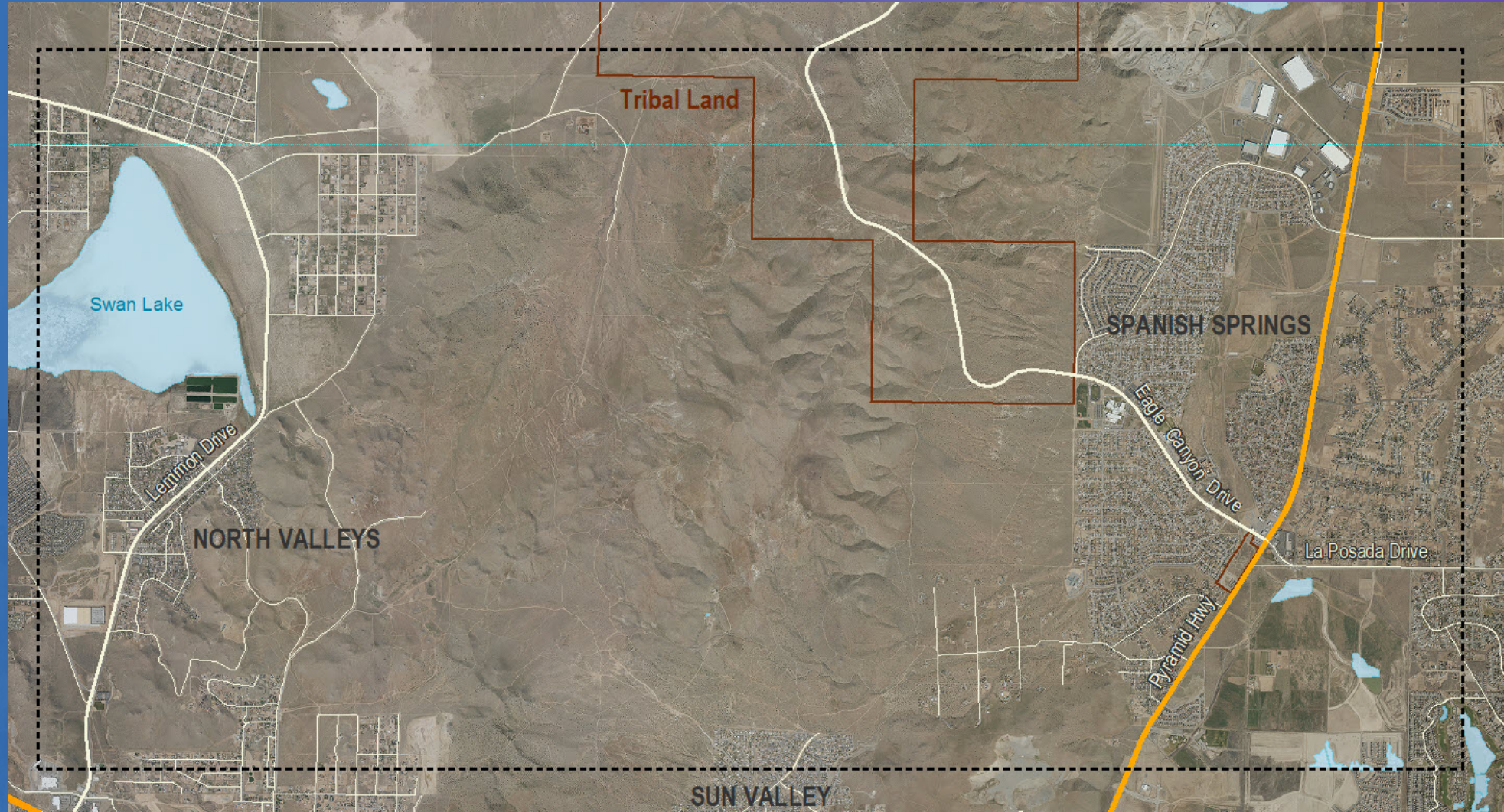
**Alignment Alternatives and
Planning and Environmental Linkages (PEL) Study**

Vision Statement



Enhance mobility and connectivity between growing communities and facilitate safe and equitable access to economic and recreational opportunities while preserving the character and heritage of the area.

Project Study Area



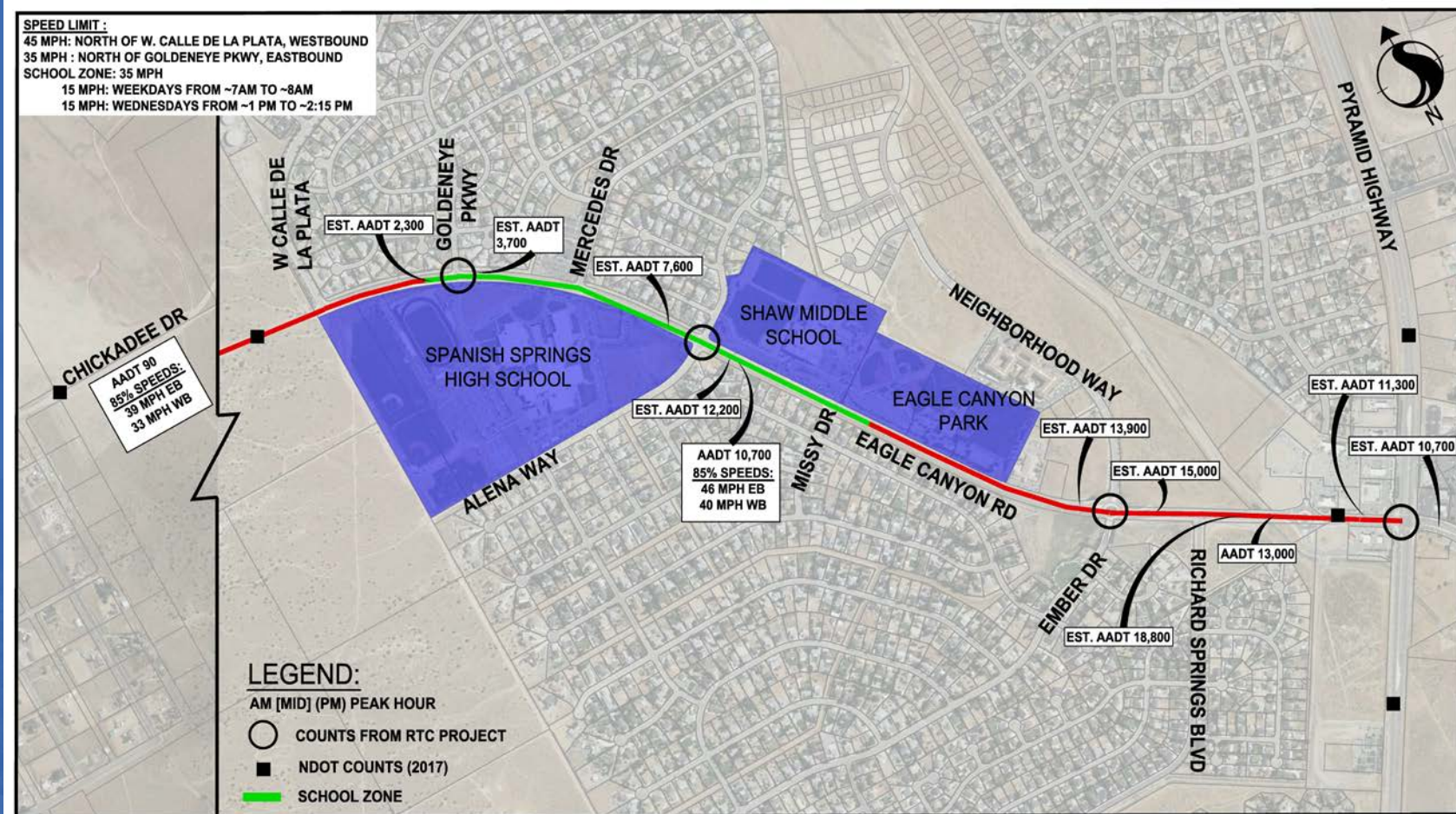
Project Overview



Goals/Objectives

- Recommendations for Operational/Safety Improvements on Existing Eagle Canyon Drive
- Planning and Environmental Linkages (PEL) Checklist
- Preferred Corridor Alignment
- Enhanced Connectivity/Emergency Access
- Infrastructure/Economic Development Opportunities

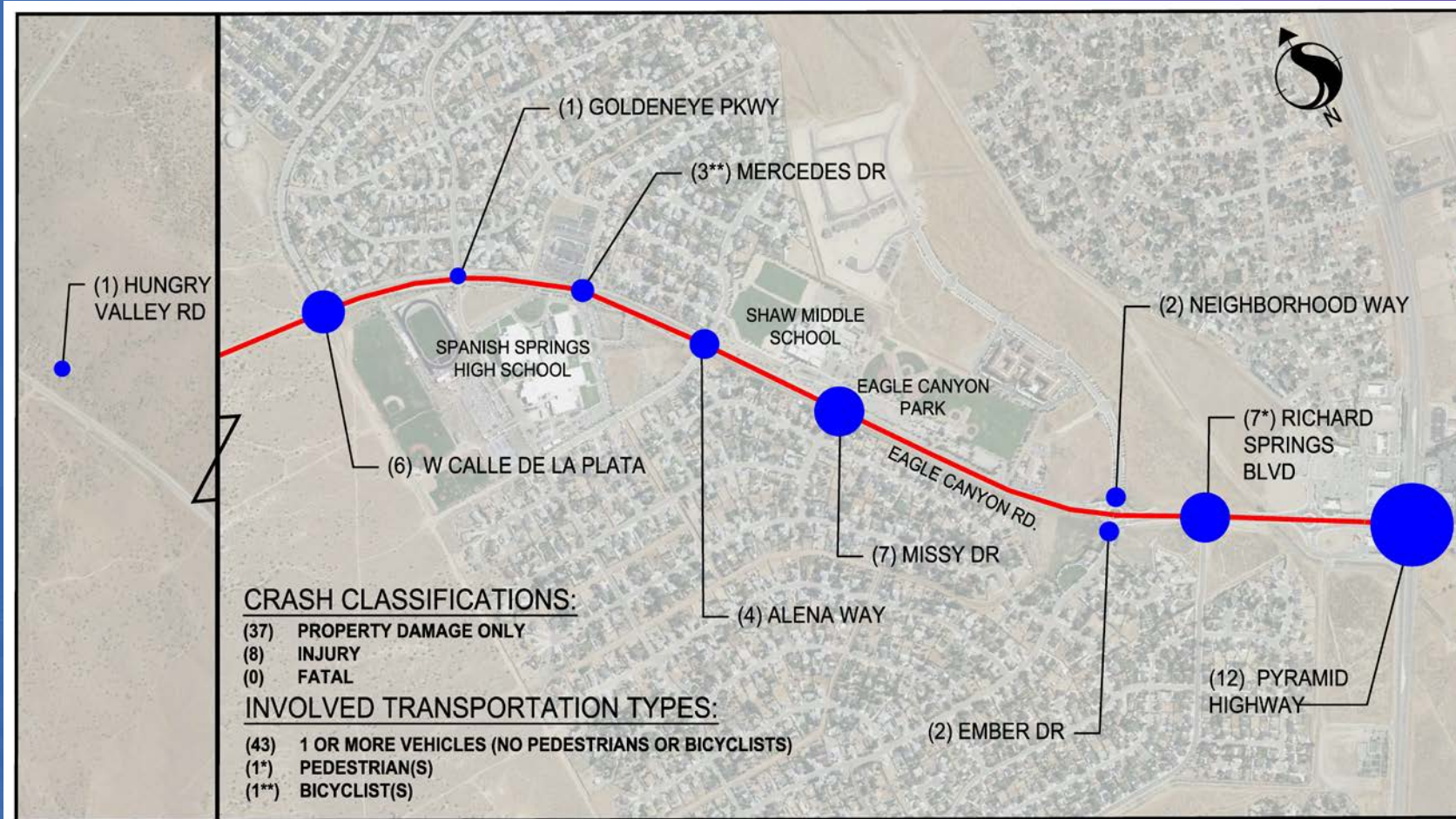
Traffic Counts



EAGLE CANYON EXTENSION PROJECT
 EXISTING TRAFFIC COUNTS



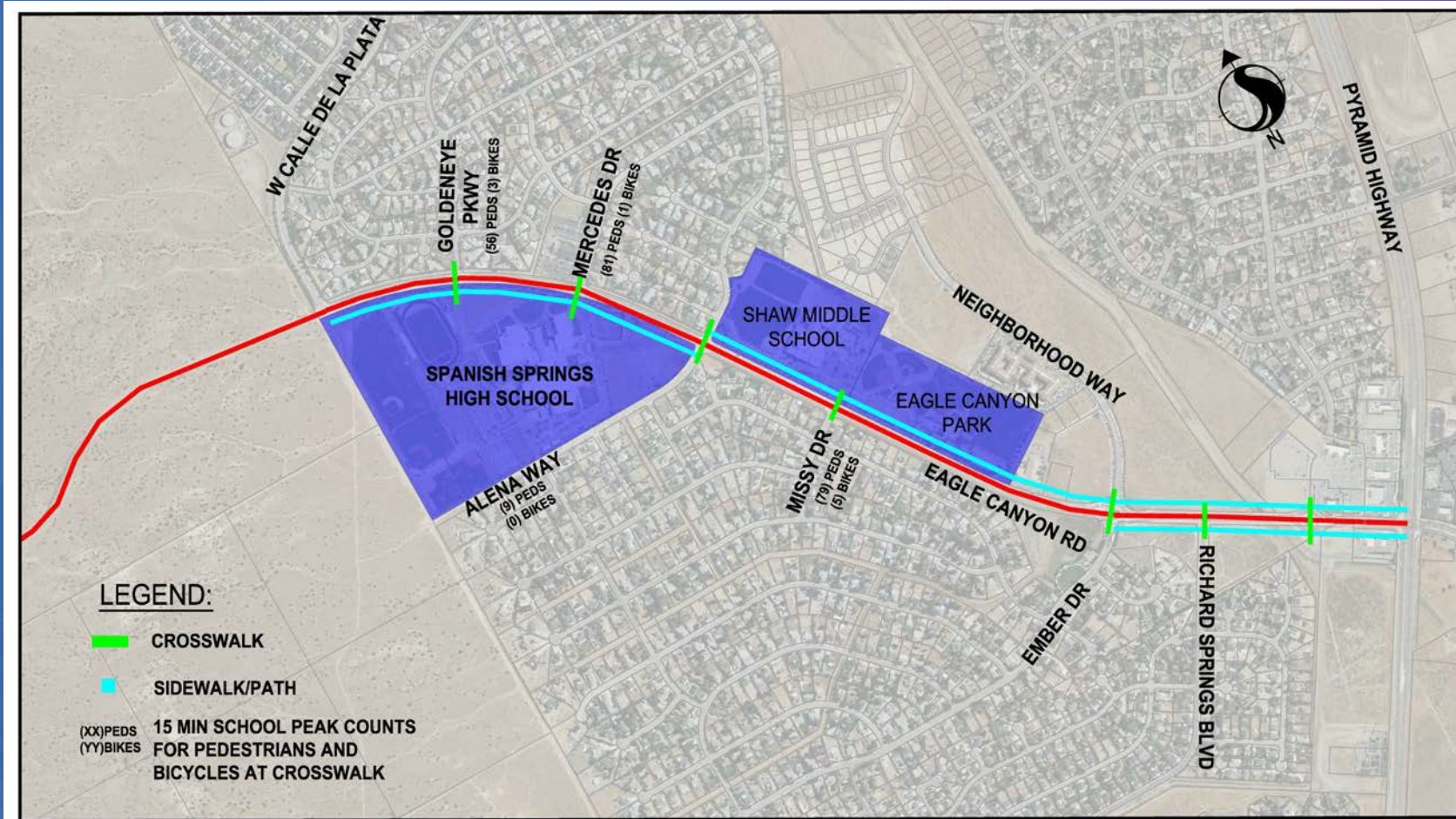
Preliminary Crash Data



EAGLE CANYON EXTENSION PROJECT
 CRASH DATA (JULY 1, 2013 - JULY 1, 2018)



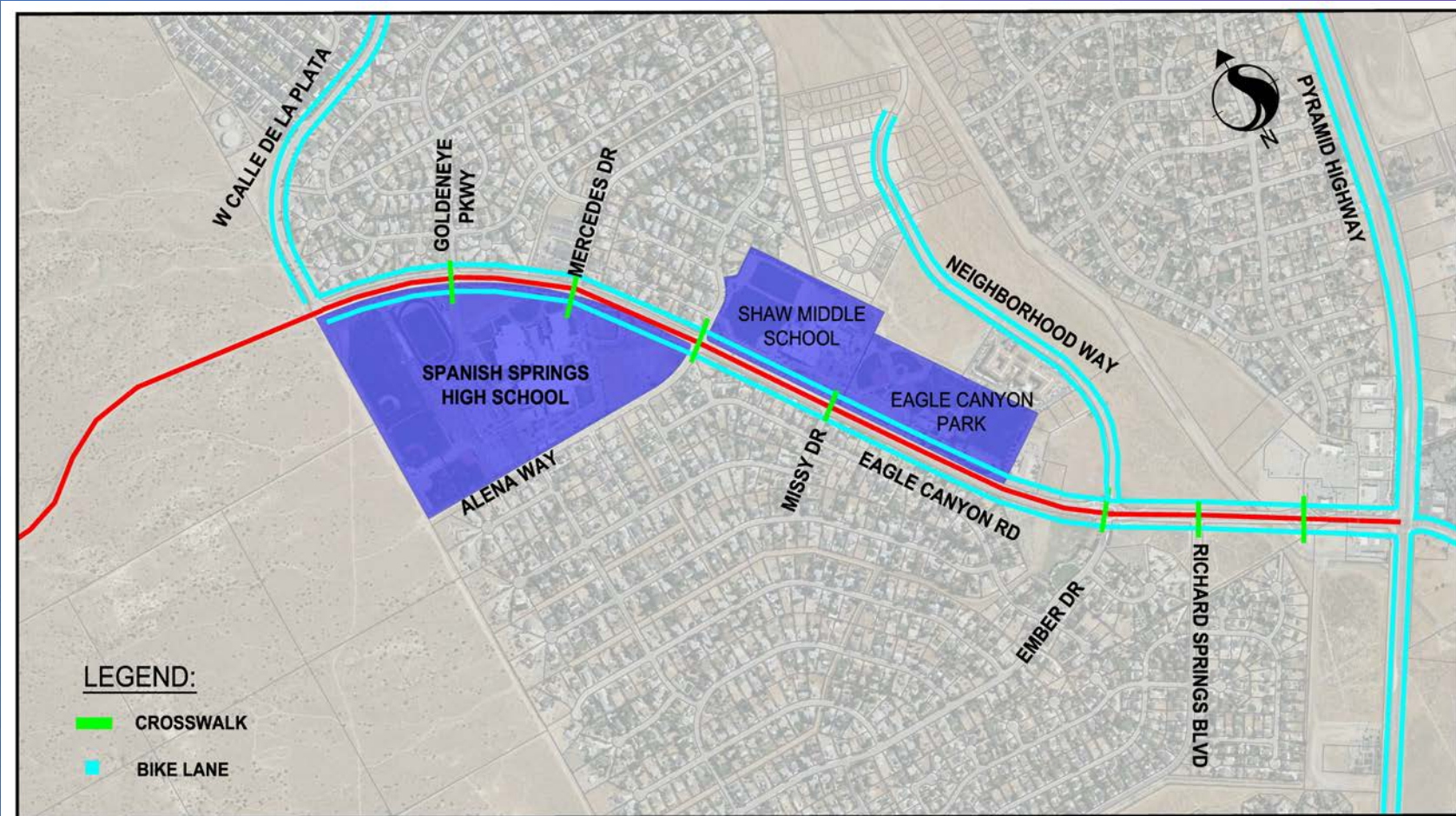
Existing Pedestrian Facilities



EAGLE CANYON EXTENSION PROJECT
PEDESTRIAN FACILITIES



Existing Bicycle Facilities



EAGLE CANYON EXTENSION PROJECT
BICYCLE FACILITIES

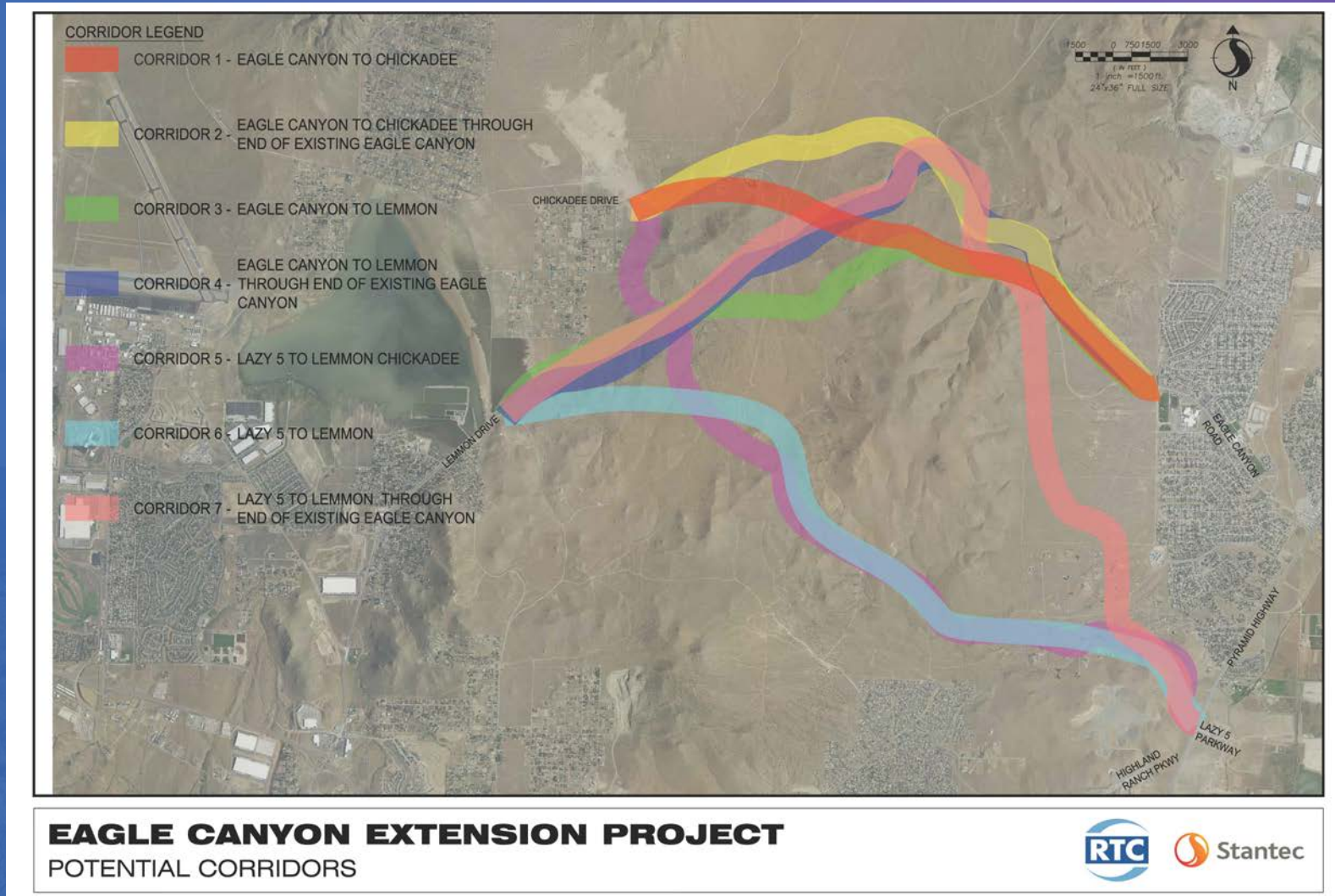




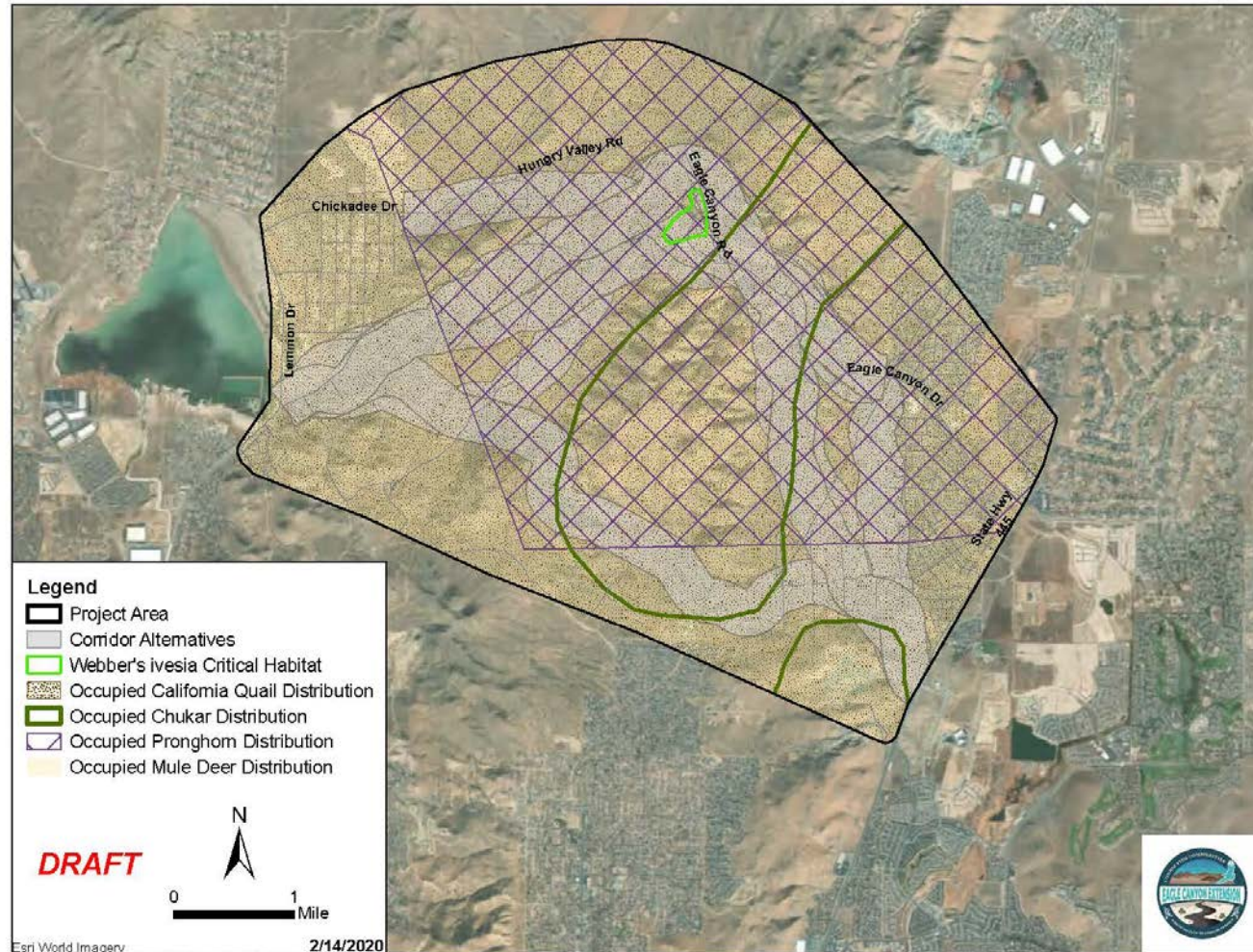
Observations

- Southbound approach at Goldeneye and at Alena are LOS F in the AM period (school zone condition)
- EBT, WBL, NBL at Eagle Canyon and Pyramid Hwy are LOS E in the AM
- All approaches fail at Eagle Canyon and Pyramid Hwy under 2040 traffic forecast
- Neighborhood Way approach encourages high speed entry into roundabout
- All school-related traffic clears within 7-10 minutes
- Spanish Springs HS Issues: parents parking in bike lane, students jaywalk to cars

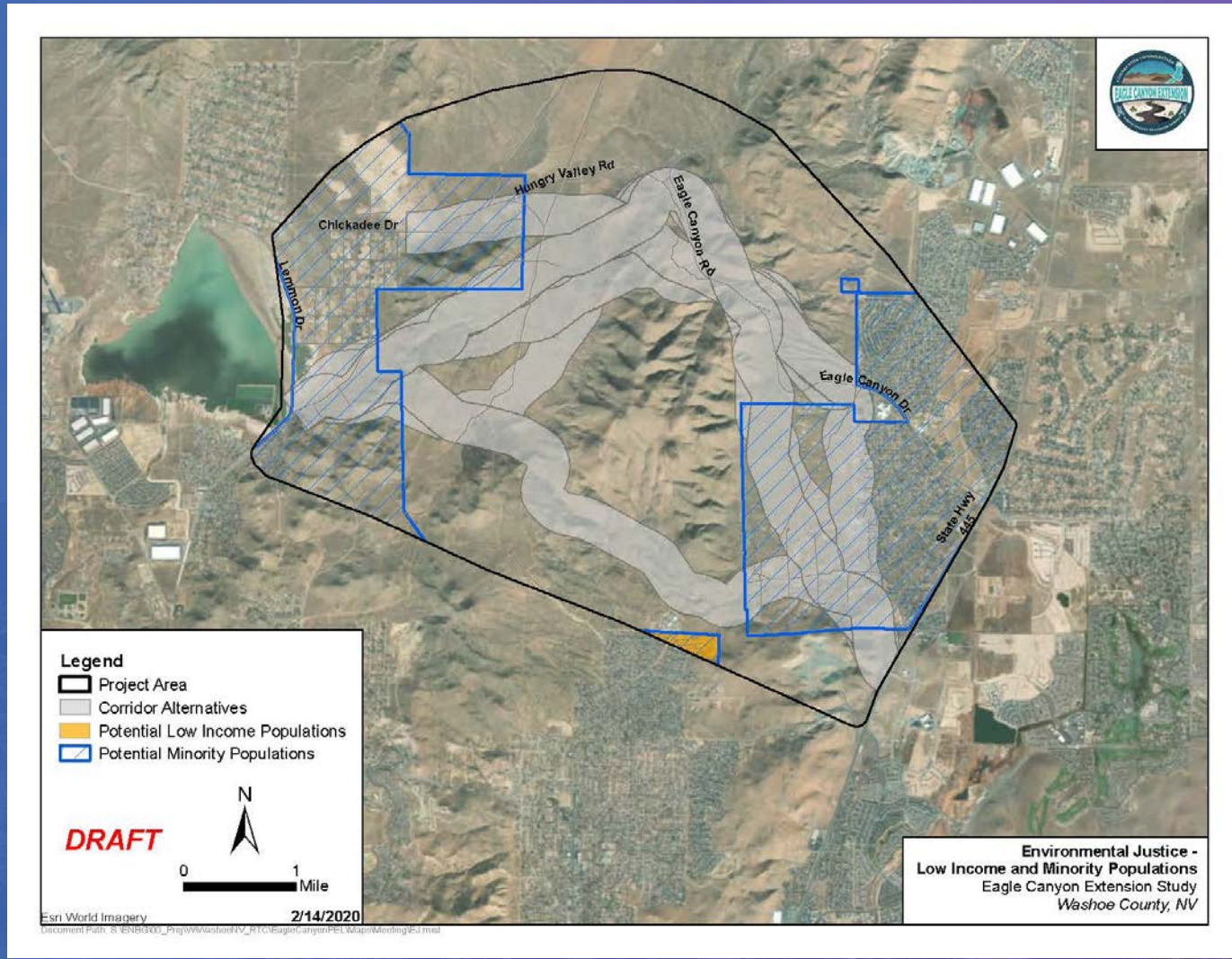
Potential Corridors



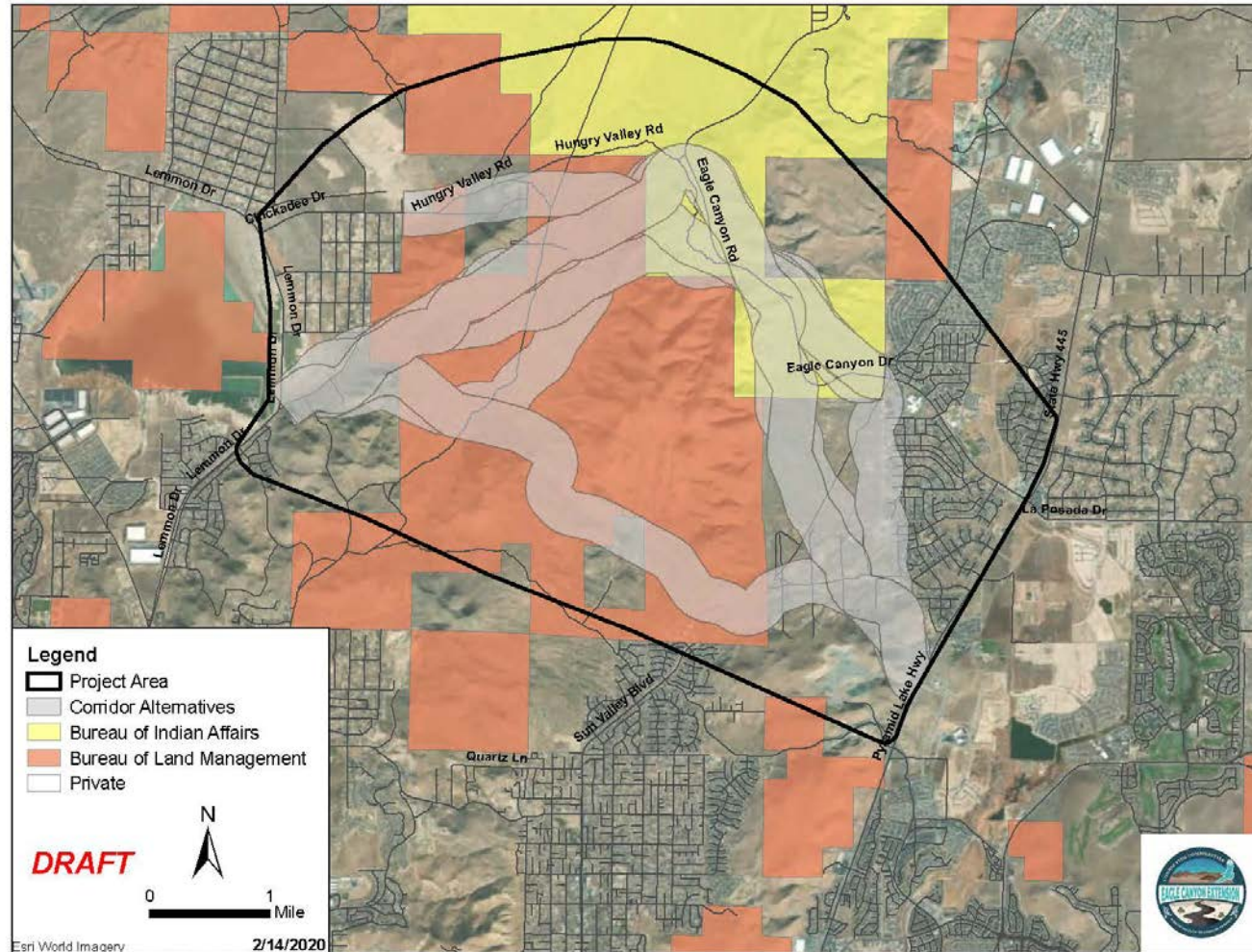
Wildlife Habitat



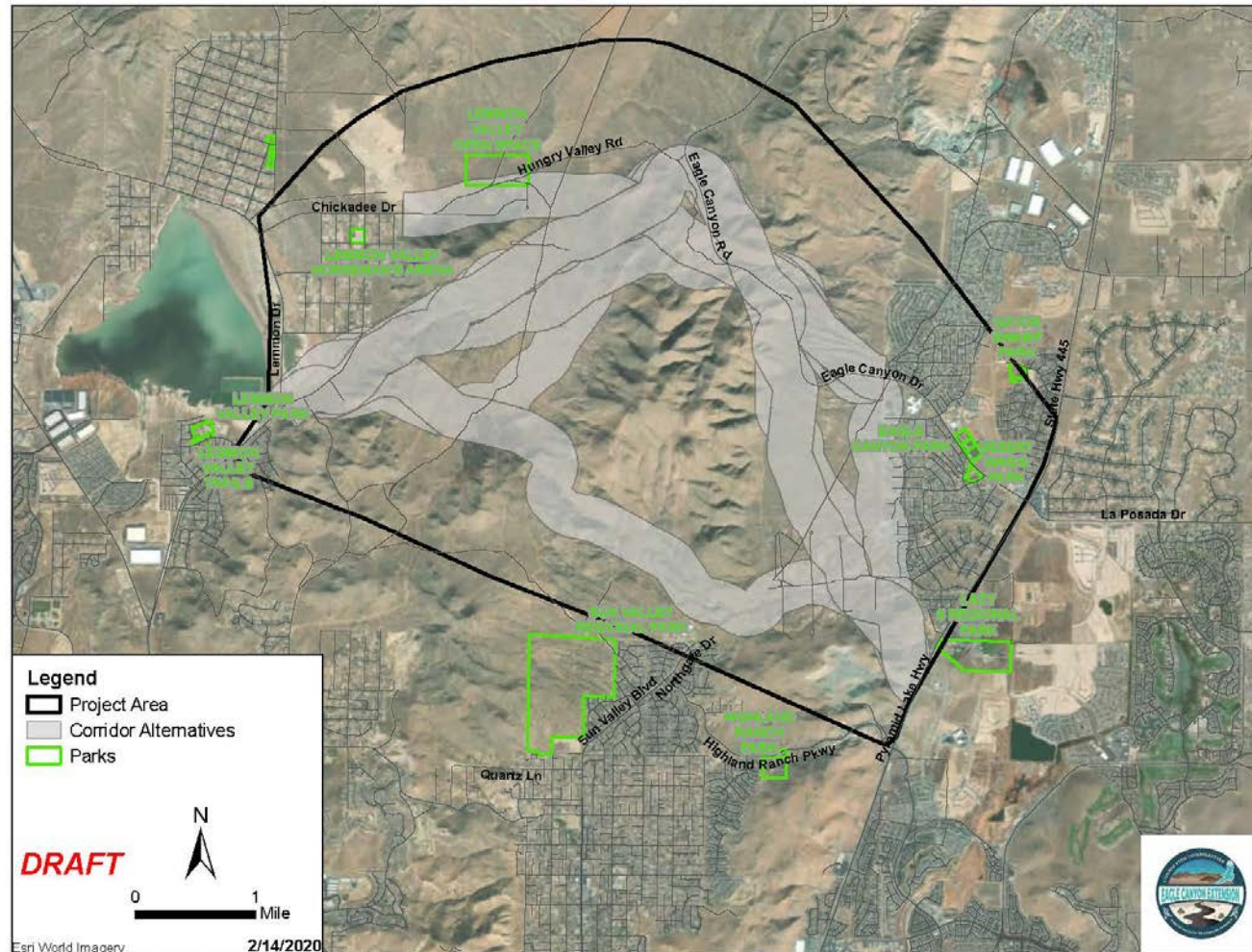
Environmental Justice Populations



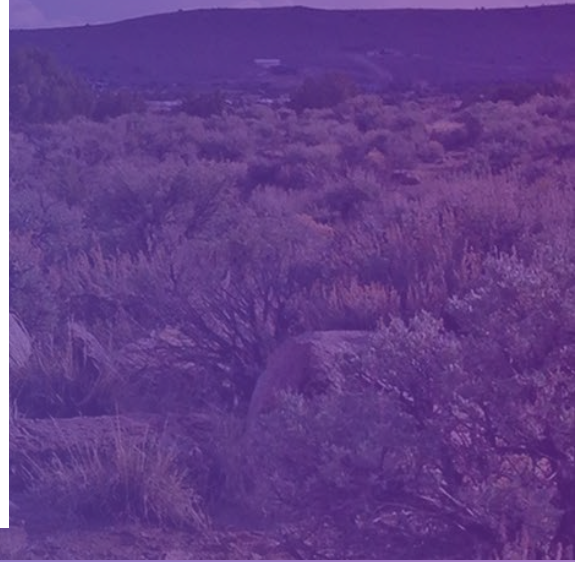
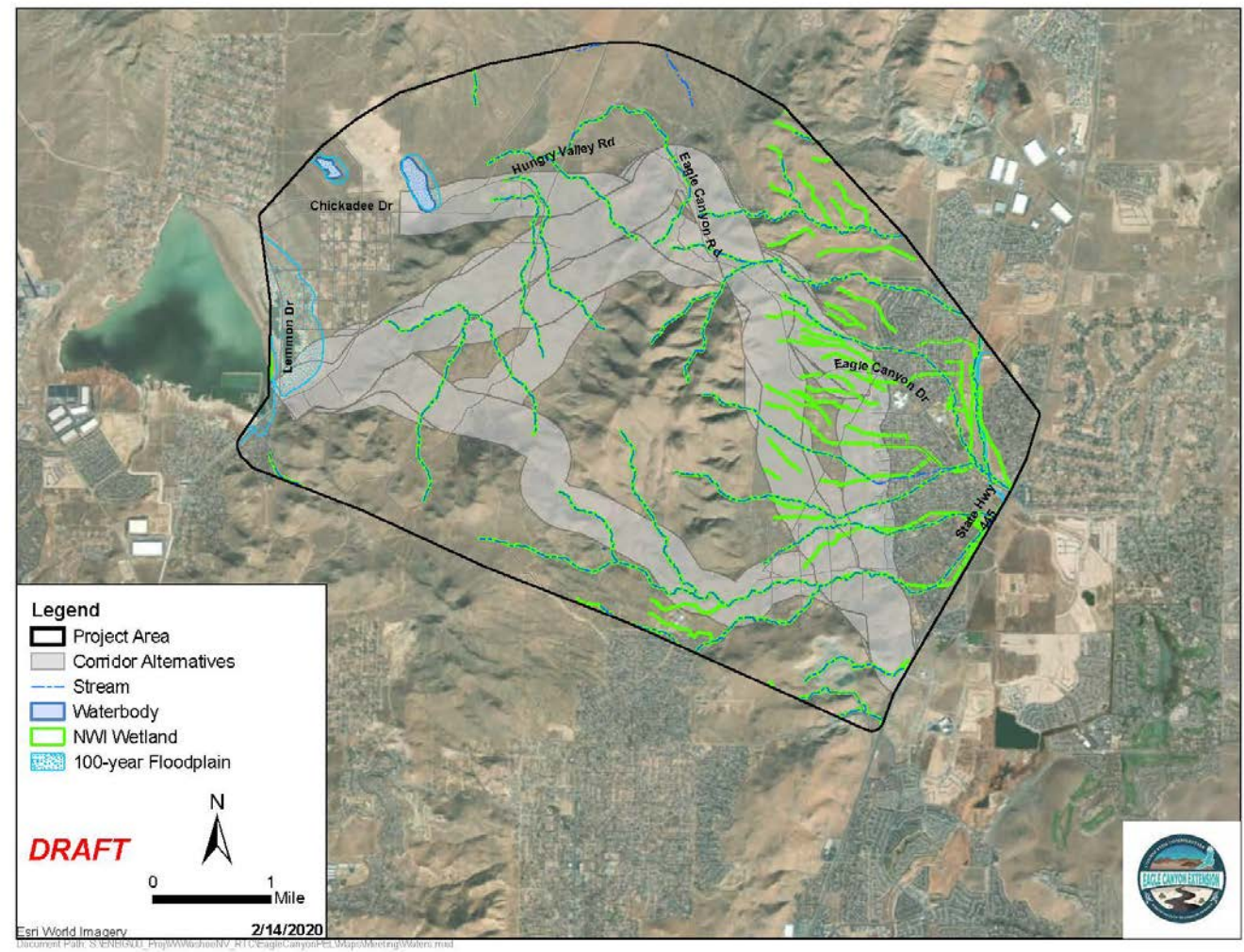
Land Ownership



Parks and Recreation



Wetlands/Hydrology





Next Steps

- Launch Survey
- Public Meetings
 - Lemmon Valley ES – 3/10/2020
 - Spanish Springs HS – 3/12/2020
- RTC TAC and CMAC Meetings
 - 4/1/2020
- Refine Analysis
- Other Potential Stakeholder Meetings
 - Reno-Sparks Indian Colony
 - Safe Routes to School
 - Bureau of Land Management

Project Team



Dan Doenges
RTC Project Manager
ddoenges@rtcwashoe.com

Trina Magoon
Stantec Project Manager
trina.magoon@stantec.com

Joe Mactutis
Stantec Transportation Technical Lead
joseph.mactutis@stantec.com

Your RTC. Our Community.